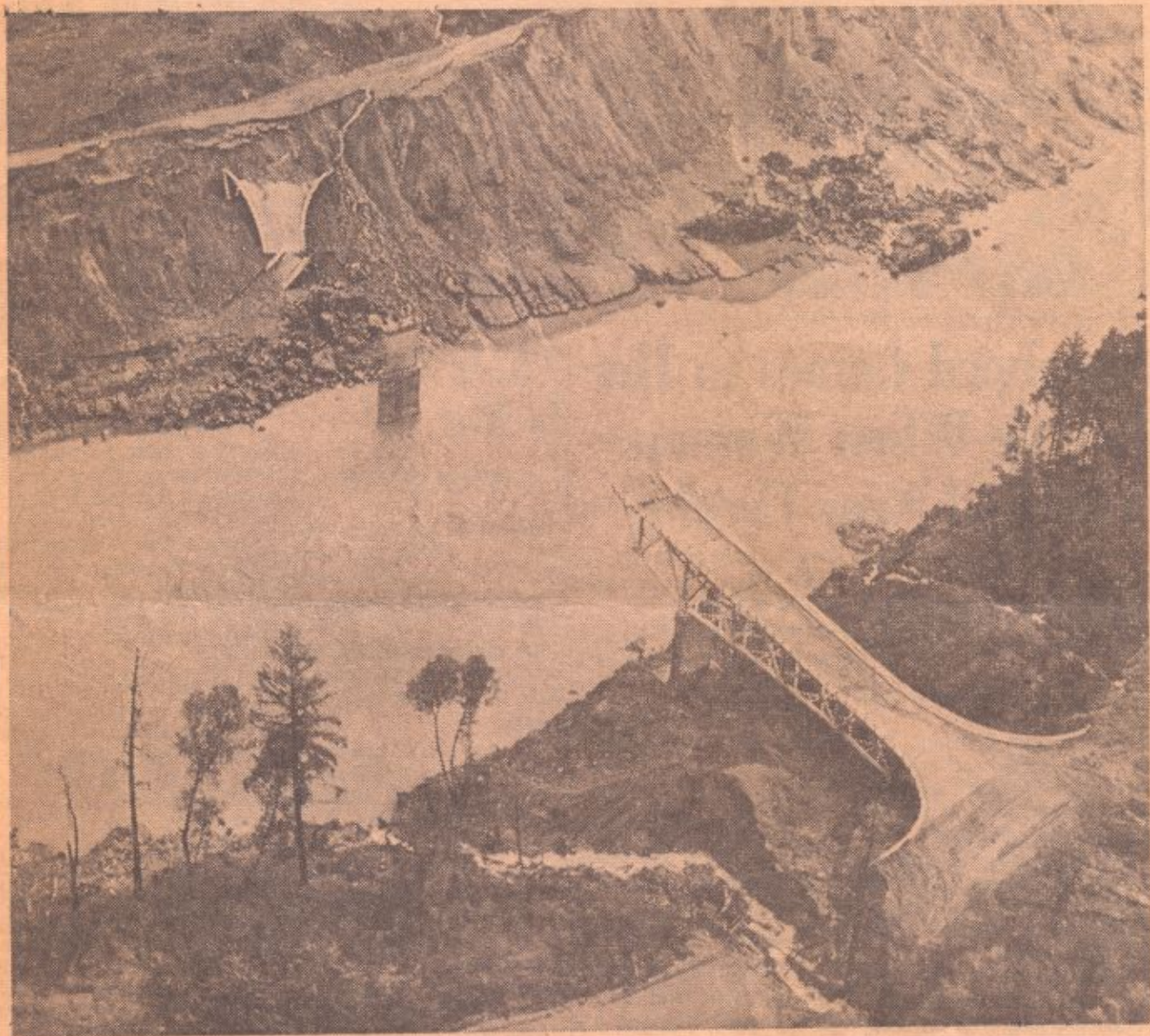


Remnants of Martins Ferry Bridge



MARTINS FERRY — This is all that is left of the attractive bridge across the Klamath River at Martins Ferry. High water cut away the north bank of approach, destroying most of the bridge. The approach to the south side is cut off by a

runaway creek which has cut through the highway. The photo was taken by Neil Hulbert, Eureka Newspapers photographer on an aerial tour of the stricken inland country.