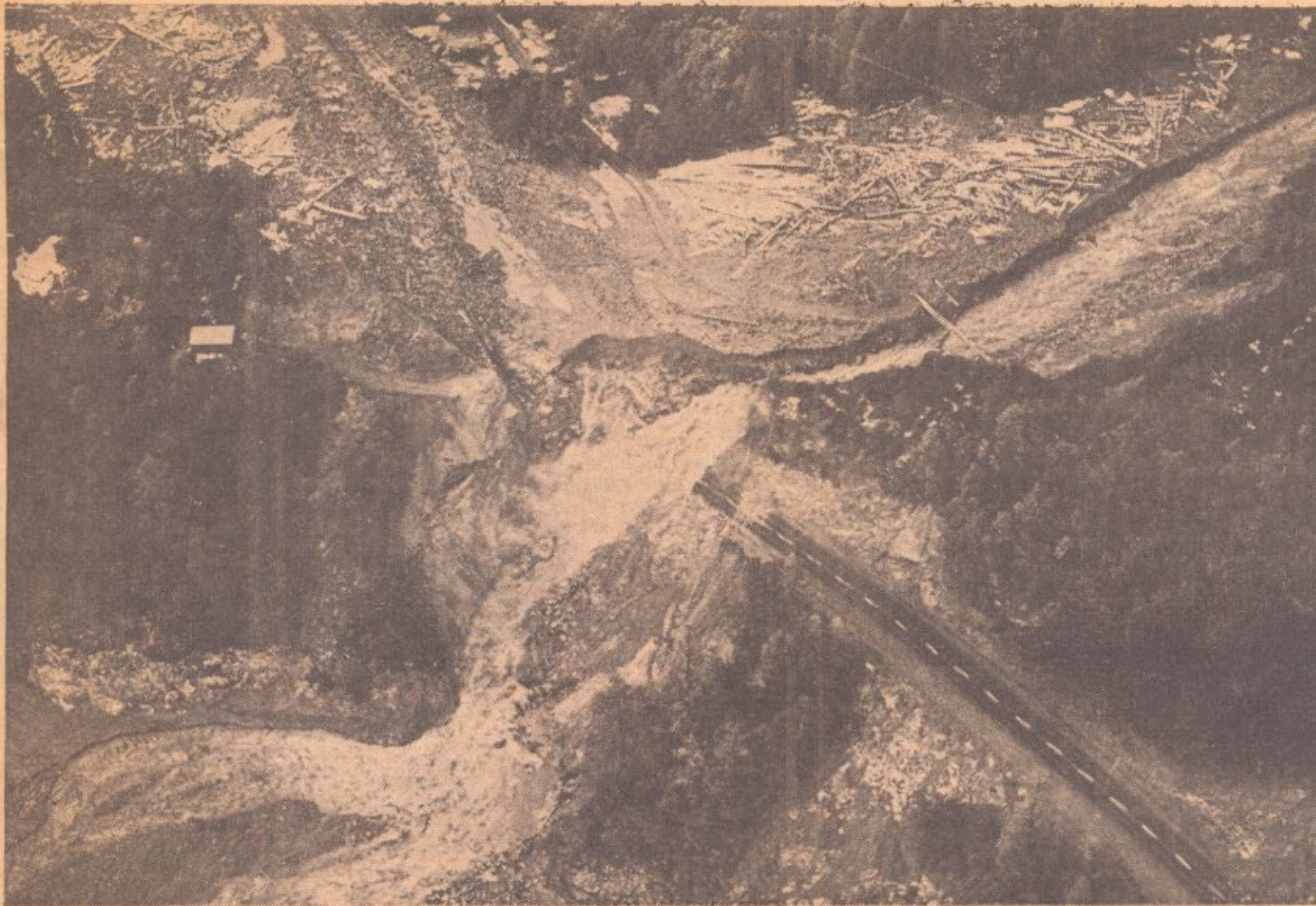


Wild Bluff Creek Divided Highway, Wiped Out Resort



ORLEANS — Here is another view of Highway 96, pierced by Bluff Creek on its wild ramble to join the Klamath River. At the peak of the storm, the famous creek left its bed, upper left, to wipe out Gephart's resort, at one-time located in the deso-

lated area, left, above the buildings. The building is the mountain home of former Arcata fire chief, Roy Sorenson. It remained unharmed. The break occurred on the route between Weitchpec and Orleans.